

TYPE A1S

47 sqm / 506 sqft

- Blk 3 #02-04 to #14-04
- Blk 5 #02-12 to #08-12
- Blk 7 #02-20 to #12-20

TYPE A1S(L)

66 sqm / 710 sqft

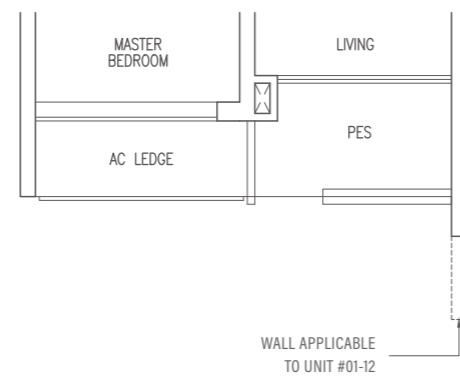
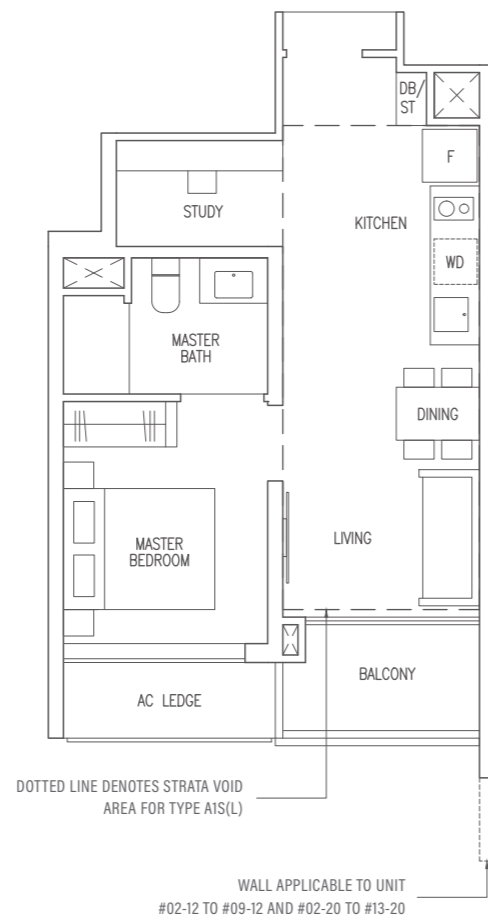
(Inclusive of 19 sqm strata void over living / dining)

- Blk 3 #15-04
- Blk 5 #09-12
- Blk 7 #13-20

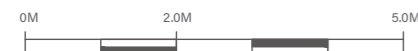
TYPE A1S(p)

47 sqm / 506 sqft

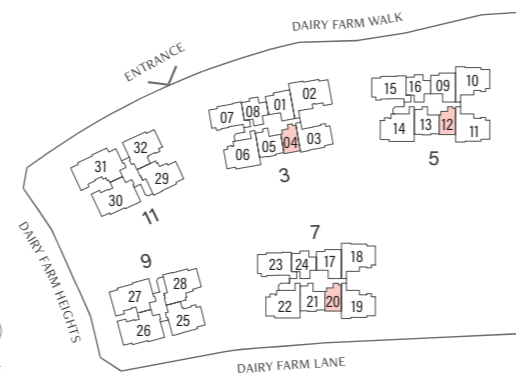
- Blk 3 #01-04
- Blk 5 #01-12



- F Fridge
- WD Washer Dryer
- HS Household Shelter
- DB / ST Distribution Board / Storage
- RC LEDGE Reinforced Concrete Ledge



KEY PLAN IS NOT DRAWN TO SCALE



TYPE B1

56 sqm / 603 sqft

- Blk 3 #02-08 to #14-08
- Blk 5 #03-16 to #08-16
- Blk 7 #02-24 to #12-24

TYPE B1(L)

69 sqm / 743 sqft

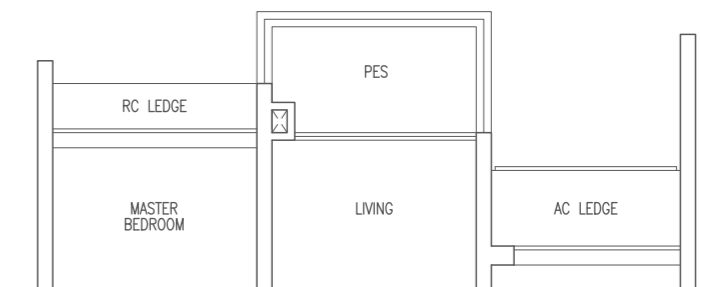
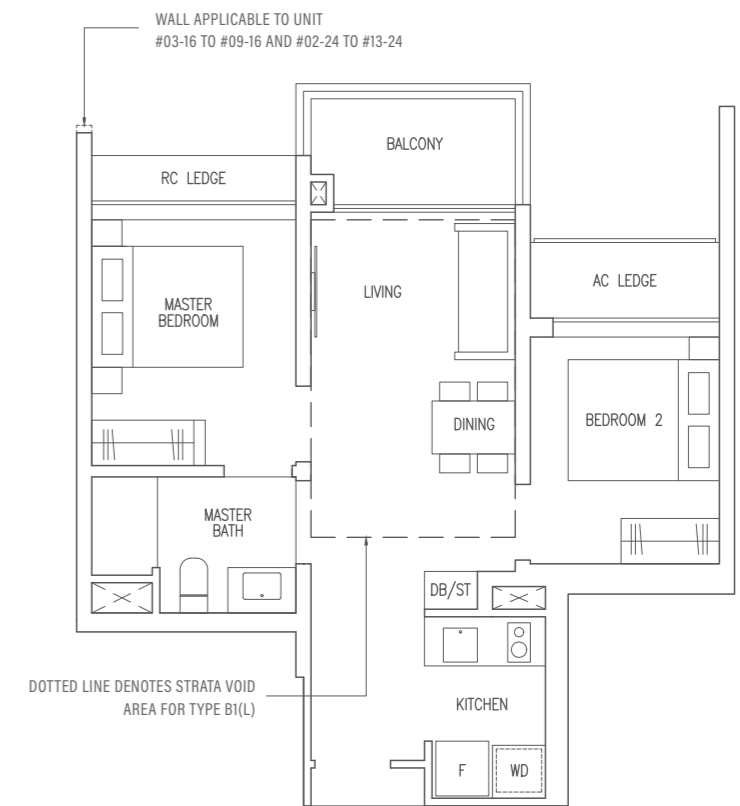
(Inclusive of 13 sqm strata void over living / dining)

- Blk 3 #15-08
- Blk 5 #09-16
- Blk 7 #13-24

TYPE B1(p)

56 sqm / 603 sqft

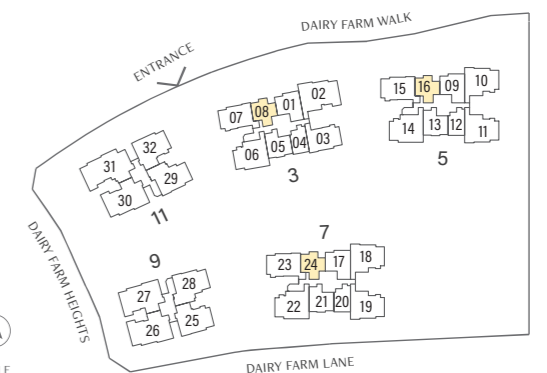
- Blk 3 #01-08



- F Fridge
- WD Washer Dryer
- HS Household Shelter
- DB / ST Distribution Board / Storage
- RC LEDGE Reinforced Concrete Ledge



KEY PLAN IS NOT DRAWN TO SCALE



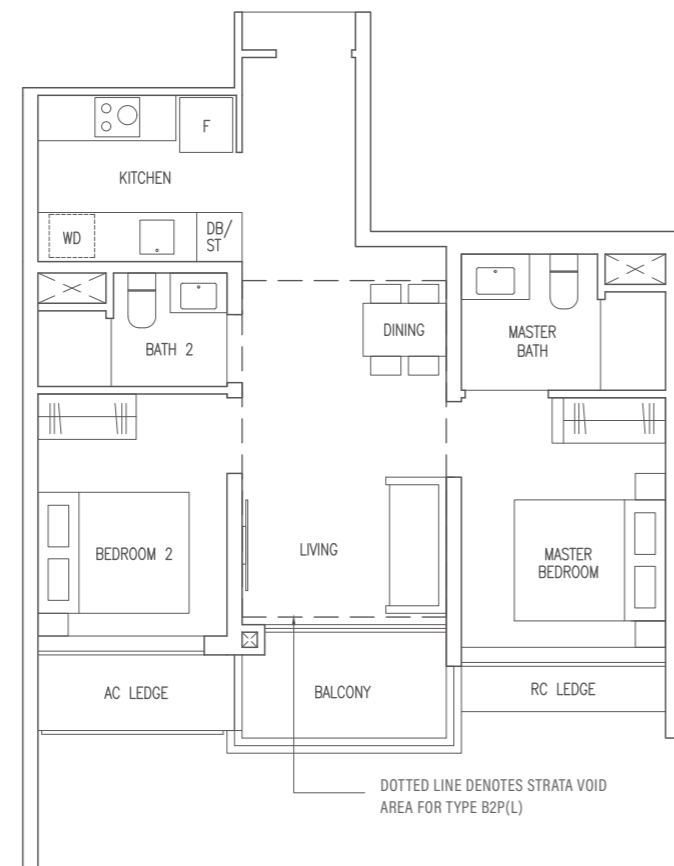
Area includes AC ledge, balcony, Private Enclosed Space (PES) and strata void where applicable. All RC ledges are excluded from strata area and are non-load bearing. Some units are mirror images of the floor plans shown in the brochure. Orientations and facings will differ depending on the unit you are purchasing, please refer to the key plan. The above plans and illustrations are subject to changes as may be required or approved by the relevant authorities and do not form part of any offer or contract. Areas are estimates only and are subject to final survey. The balcony & PES shall not be enclosed unless with the approved balcony screen. For an illustration of the approved balcony screen, please refer to Annex 1 of this brochure.

Area includes AC ledge, balcony, Private Enclosed Space (PES) and strata void where applicable. All RC ledges are excluded from strata area and are non-load bearing. Some units are mirror images of the floor plans shown in the brochure. Orientations and facings will differ depending on the unit you are purchasing, please refer to the key plan. The above plans and illustrations are subject to changes as may be required or approved by the relevant authorities and do not form part of any offer or contract. Areas are estimates only and are subject to final survey. The balcony & PES shall not be enclosed unless with the approved balcony screen. For an illustration of the approved balcony screen, please refer to Annex 1 of this brochure.

TYPE B2P

63 sqm / 678 sqft

- Blk 3 #02-05 to #14-05
- Blk 5 #02-13 to #08-13
- Blk 7 #02-21 to #12-21

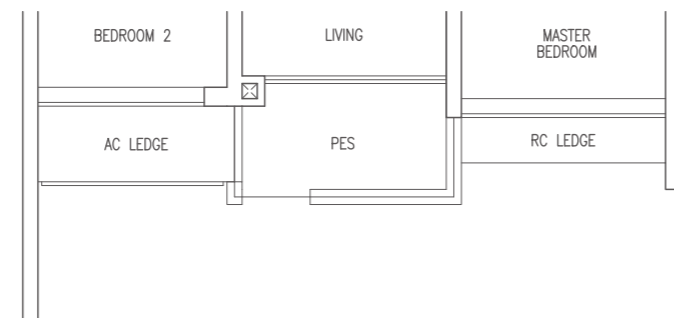


TYPE B2P(L)

77 sqm / 829 sqft

(Inclusive of 14 sqm strata void over living / dining)

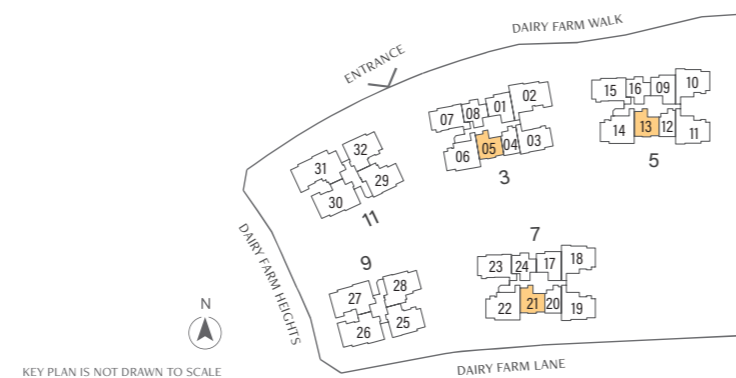
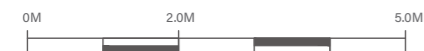
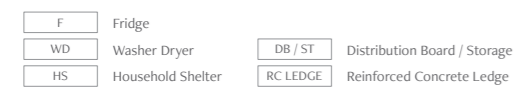
- Blk 3 #15-05
- Blk 5 #09-13
- Blk 7 #13-21



TYPE B2P(p)

63 sqm / 678 sqft

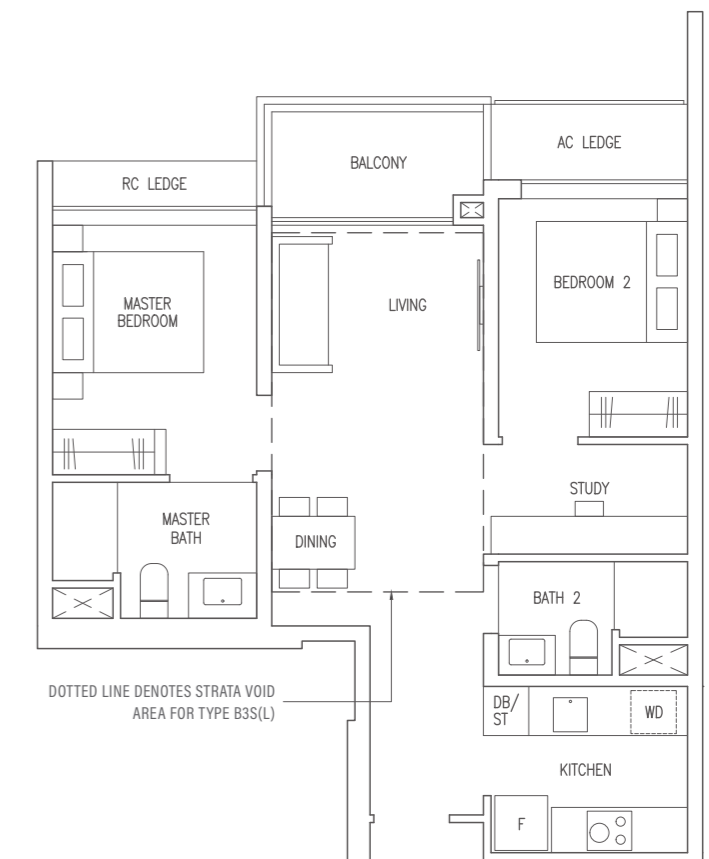
- Blk 3 #01-05
- Blk 5 #01-13



TYPE B3S

69 sqm / 743 sqft

- Blk 3 #02-01 to #14-01
- Blk 5 #03-09 to #08-09
- Blk 7 #02-17 to #12-17

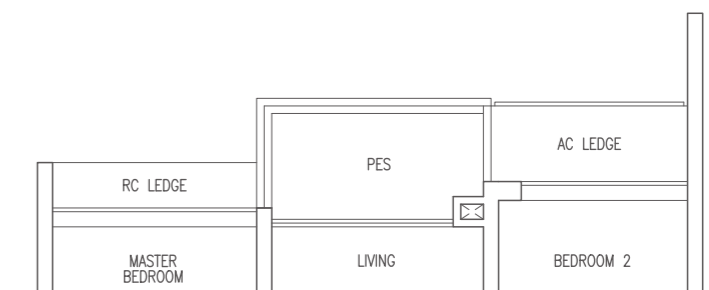


TYPE B3S(L)

84 sqm / 904 sqft

(Inclusive of 15 sqm strata void over living / dining)

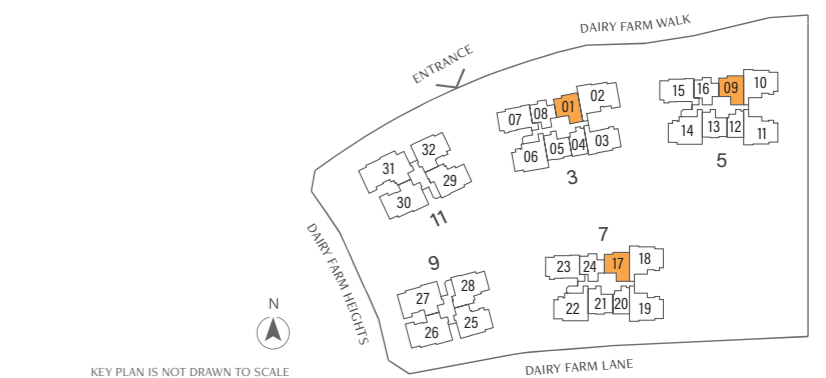
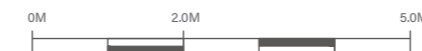
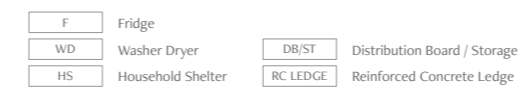
- Blk 3 #15-01
- Blk 5 #09-09
- Blk 7 #13-17



TYPE B3S(p)

69 sqm / 743 sqft

- Blk 3 #01-01



Area includes AC ledge, balcony, Private Enclosed Space (PES) and strata void where applicable. All RC ledges are excluded from strata area and are non-load bearing. Some units are mirror images of the floor plans shown in the brochure. Orientations and facings will differ depending on the unit you are purchasing, please refer to the key plan. The above plans and illustrations are subject to changes as may be required or approved by the relevant authorities and do not form part of any offer or contract. Areas are estimates only and are subject to final survey. The balcony & PES shall not be enclosed unless with the approved balcony screen. For an illustration of the approved balcony screen, please refer to Annex 1 of this brochure.

Area includes AC ledge, balcony, Private Enclosed Space (PES) and strata void where applicable. All RC ledges are excluded from strata area and are non-load bearing. Some units are mirror images of the floor plans shown in the brochure. Orientations and facings will differ depending on the unit you are purchasing, please refer to the key plan. The above plans and illustrations are subject to changes as may be required or approved by the relevant authorities and do not form part of any offer or contract. Areas are estimates only and are subject to final survey. The balcony & PES shall not be enclosed unless with the approved balcony screen. For an illustration of the approved balcony screen, please refer to Annex 1 of this brochure.

TYPE C1

82 sqm / 883 sqft

Blk 3 #02-03 to #14-03

TYPE C1(L)

97 sqm / 1044 sqft

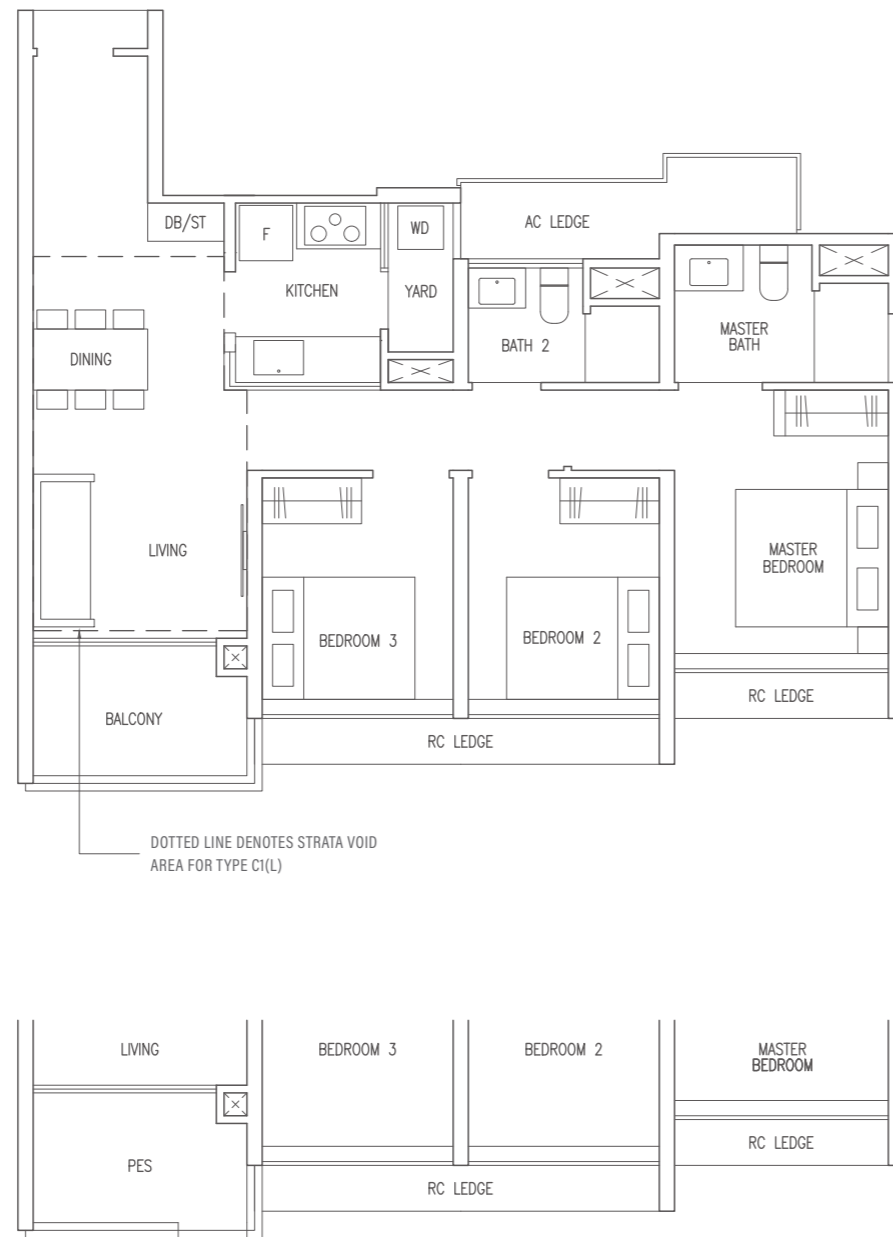
(Inclusive of 15 sqm strata void over living / dining)

Blk 3 #15-03

TYPE C1(p)

82 sqm / 883 sqft

Blk 3 #01-03



TYPE C2

82 sqm / 883 sqft

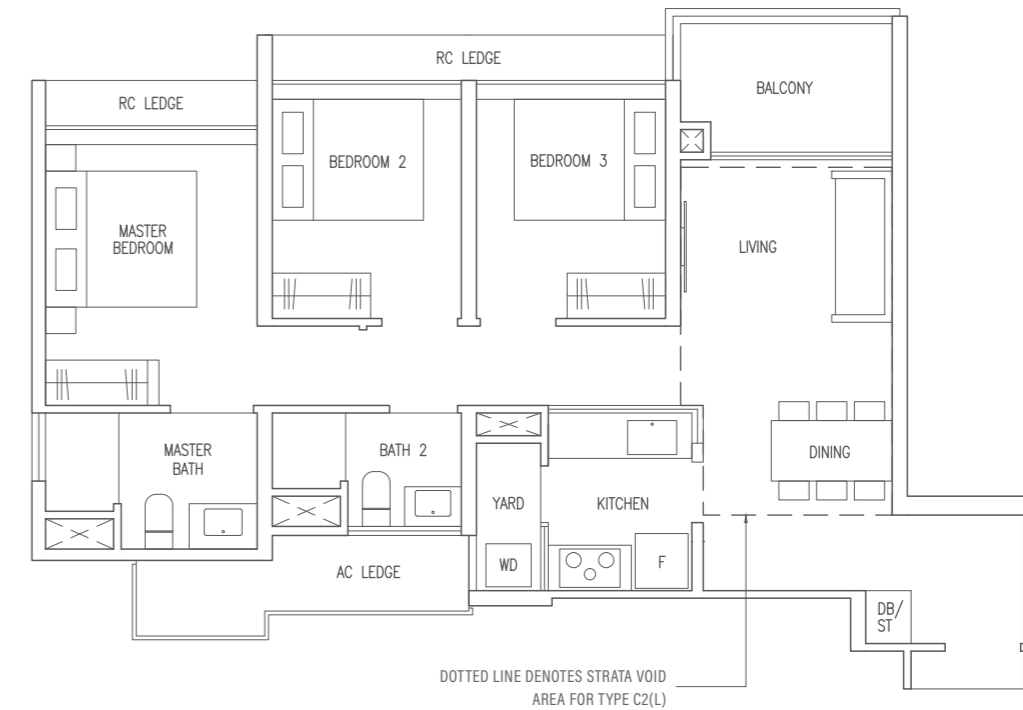
Blk 3 #04-07 to #14-07

TYPE C2(L)

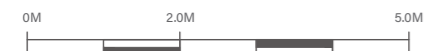
96 sqm / 1033 sqft

(Inclusive of 14 sqm strata void over living / dining)

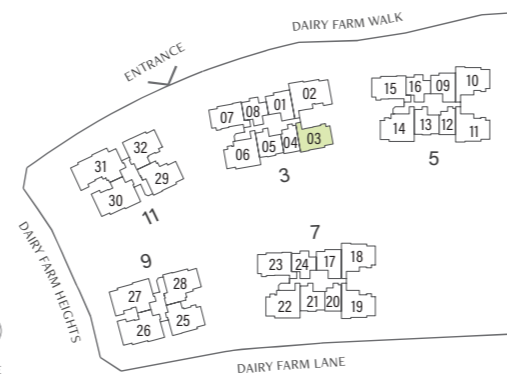
Blk 3 #15-07



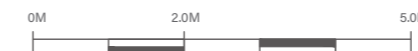
F	Fridge	DB/ST	Distribution Board / Storage
WD	Washer Dryer	RC LEDGE	Reinforced Concrete Ledge
HS	Household Shelter		



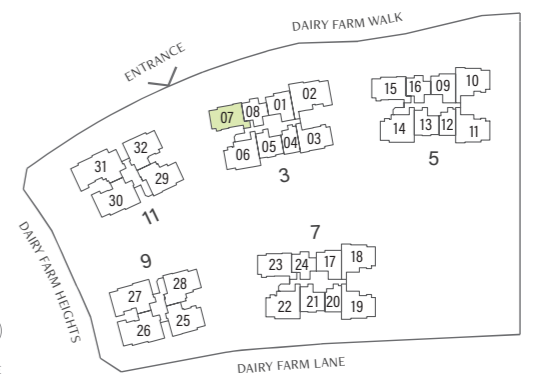
KEY PLAN IS NOT DRAWN TO SCALE



F	Fridge	DB/ST	Distribution Board / Storage
WD	Washer Dryer	RC LEDGE	Reinforced Concrete Ledge
HS	Household Shelter		



KEY PLAN IS NOT DRAWN TO SCALE



Area includes AC ledge, balcony, Private Enclosed Space (PES) and strata void where applicable. All RC ledges are excluded from strata area and are non-load bearing. Some units are mirror images of the floor plans shown in the brochure. Orientations and facings will differ depending on the unit you are purchasing, please refer to the key plan. The above plans and illustrations are subject to changes as may be required or approved by the relevant authorities and do not form part of any offer or contract. Areas are estimates only and are subject to final survey. The balcony & PES shall not be enclosed unless with the approved balcony screen. For an illustration of the approved balcony screen, please refer to Annex 1 of this brochure.

Area includes AC ledge, balcony, Private Enclosed Space (PES) and strata void where applicable. All RC ledges are excluded from strata area and are non-load bearing. Some units are mirror images of the floor plans shown in the brochure. Orientations and facings will differ depending on the unit you are purchasing, please refer to the key plan. The above plans and illustrations are subject to changes as may be required or approved by the relevant authorities and do not form part of any offer or contract. Areas are estimates only and are subject to final survey. The balcony & PES shall not be enclosed unless with the approved balcony screen. For an illustration of the approved balcony screen, please refer to Annex 1 of this brochure.

TYPE C3

86 sqm / 926 sqft

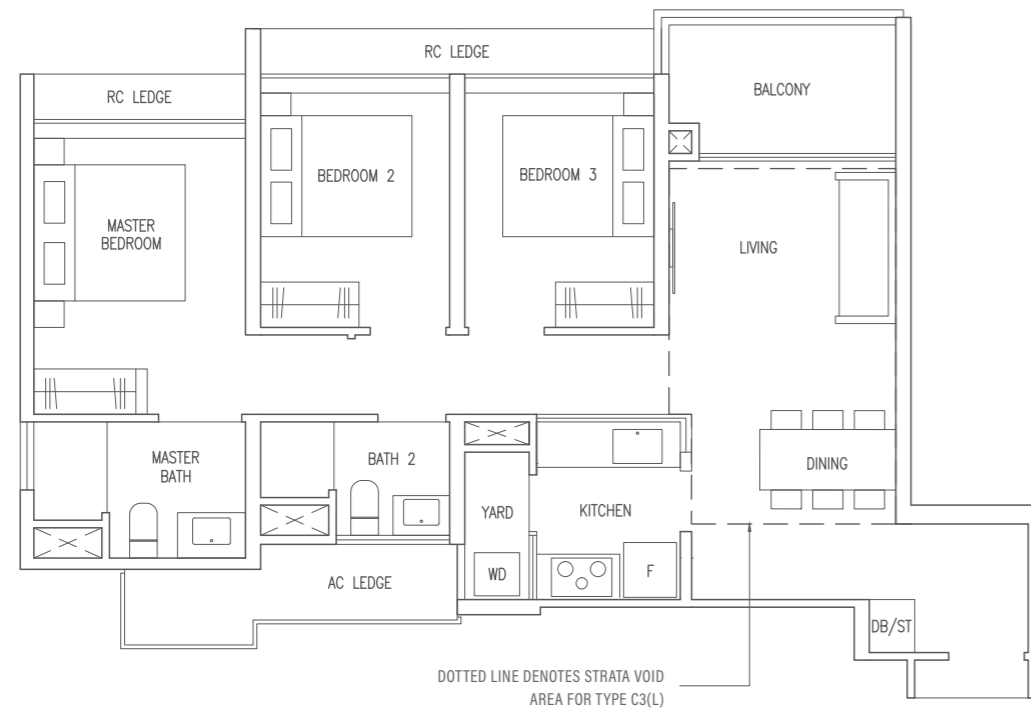
Blk 5 #03-15 to #08-15
Blk 7 #02-23 to #12-23

TYPE C3(L)

102 sqm / 1098 sqft

(Inclusive of 16 sqm strata void over living / dining)

Blk 5 #09-15
Blk 7 #13-23



TYPE C4P

96 sqm / 1033 sqft

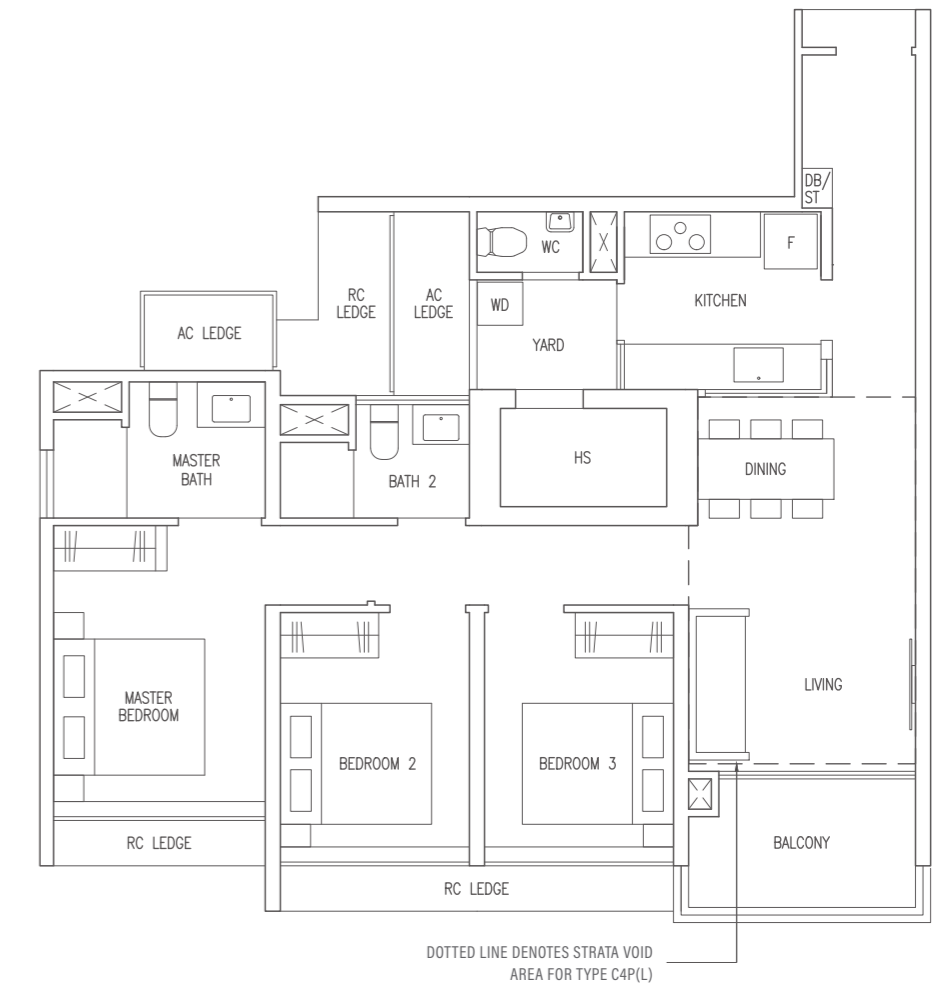
Blk 3 #02-06 to #14-06
Blk 5 #02-14 to #08-14
Blk 7 #02-22 to #12-22

TYPE C4P(L)

112 sqm / 1206 sqft

(Inclusive of 16 sqm strata void over living / dining)

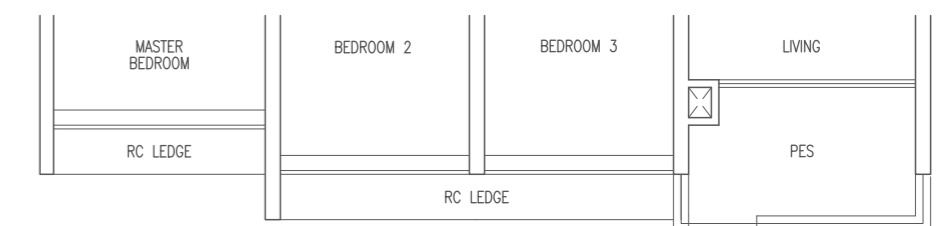
Blk 3 #15-06
Blk 5 #09-14
Blk 7 #13-22



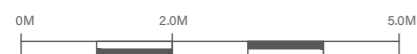
TYPE C4P(p)

96 sqm / 1033 sqft

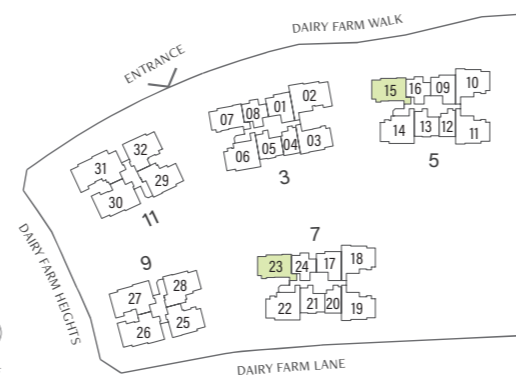
Blk 3 #01-06
Blk 5 #01-14



F	Fridge	DB/ST	Distribution Board / Storage
WD	Washer Dryer	RC LEDGE	Reinforced Concrete Ledge
HS	Household Shelter		



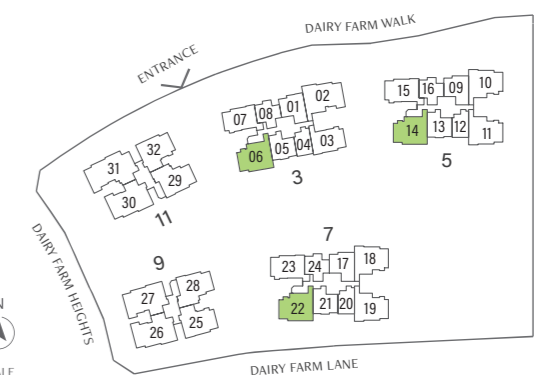
KEY PLAN IS NOT DRAWN TO SCALE



F	Fridge	DB/ST	Distribution Board / Storage
WD	Washer Dryer	RC LEDGE	Reinforced Concrete Ledge
HS	Household Shelter		



KEY PLAN IS NOT DRAWN TO SCALE



Area includes AC ledge, balcony, Private Enclosed Space (PES) and strata void where applicable. All RC ledges are excluded from strata area and are non-load bearing. Some units are mirror images of the floor plans shown in the brochure. Orientations and facings will differ depending on the unit you are purchasing, please refer to the key plan. The above plans and illustrations are subject to changes as may be required or approved by the relevant authorities and do not form part of any offer or contract. Areas are estimates only and are subject to final survey. The balcony & PES shall not be enclosed unless with the approved balcony screen. For an illustration of the approved balcony screen, please refer to Annex 1 of this brochure.

Area includes AC ledge, balcony, Private Enclosed Space (PES) and strata void where applicable. All RC ledges are excluded from strata area and are non-load bearing. Some units are mirror images of the floor plans shown in the brochure. Orientations and facings will differ depending on the unit you are purchasing, please refer to the key plan. The above plans and illustrations are subject to changes as may be required or approved by the relevant authorities and do not form part of any offer or contract. Areas are estimates only and are subject to final survey. The balcony & PES shall not be enclosed unless with the approved balcony screen. For an illustration of the approved balcony screen, please refer to Annex 1 of this brochure.

TYPE C5P

96 sqm / 1033 sqft

Blk 9 #02-25 to #13-25

MIRROR UNIT

Blk 11 #04-32 to #13-32

TYPE C5P(L)

115 sqm / 1238 sqft

(Inclusive of 19 sqm strata void over living / dining)

Blk 9 #14-25

MIRROR UNIT

Blk 11 #14-32

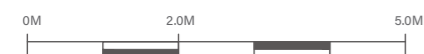
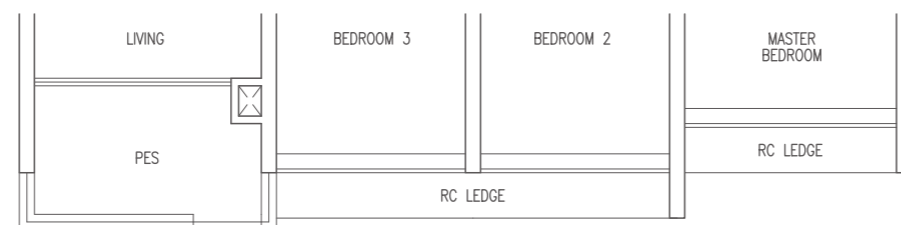


DOTTED LINE DENOTES STRATA VOID AREA FOR TYPE C5P(L)

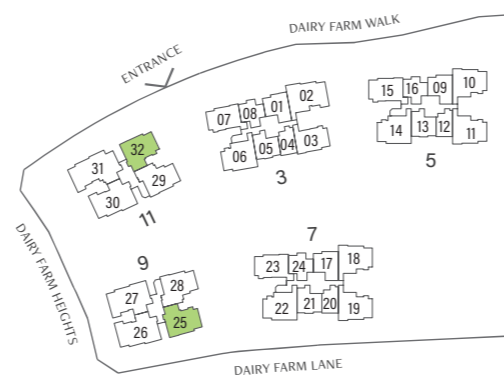
TYPE C5P(p)

96 sqm / 1033 sqft

Blk 9 #01-25



KEY PLAN IS NOT DRAWN TO SCALE



TYPE C6F

96 sqm / 1033 sqft

Blk 5 #03-10 to #08-10

Blk 7 #02-18 to #12-18

MIRROR UNIT

Blk 5 #02-11 to #08-11

Blk 7 #02-19 to #12-19

TYPE C6F(L)

113 sqm / 1216 sqft

(Inclusive of 17 sqm strata void over living / dining)

Blk 5 #09-10

Blk 7 #13-18

MIRROR UNIT

Blk 5 #09-11

Blk 7 #13-19



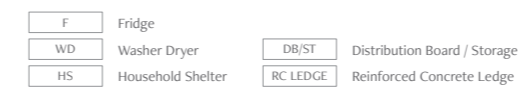
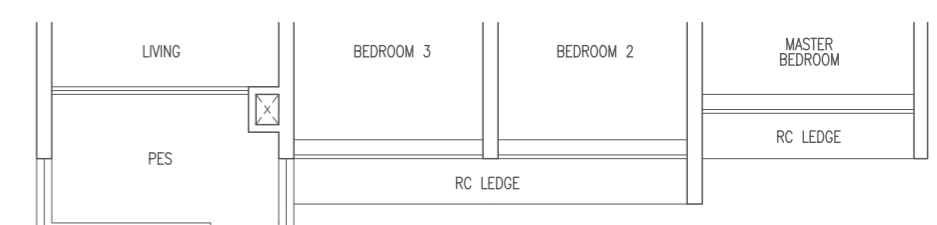
DOTTED LINE DENOTES STRATA VOID AREA FOR TYPE C6F(L)

TYPE C6F(p)

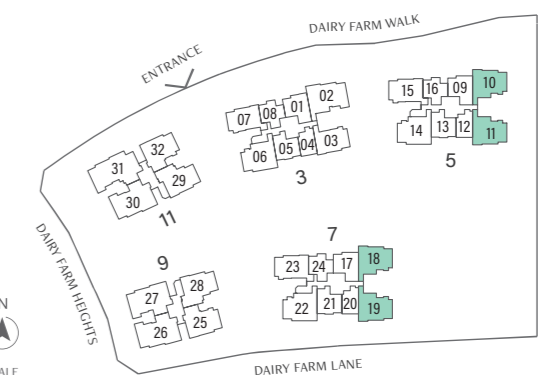
96 sqm / 1033 sqft

MIRROR UNIT

Blk 5 #01-11



KEY PLAN IS NOT DRAWN TO SCALE



Area includes AC ledge, balcony, Private Enclosed Space (PES) and strata void where applicable. All RC ledges are excluded from strata area and are non-load bearing. Some units are mirror images of the floor plans shown in the brochure. Orientations and facings will differ depending on the unit you are purchasing, please refer to the key plan. The above plans and illustrations are subject to changes as may be required or approved by the relevant authorities and do not form part of any offer or contract. Areas are estimates only and are subject to final survey. The balcony & PES shall not be enclosed unless with the approved balcony screen. For an illustration of the approved balcony screen, please refer to Annex 1 of this brochure.

Area includes AC ledge, balcony, Private Enclosed Space (PES) and strata void where applicable. All RC ledges are excluded from strata area and are non-load bearing. Some units are mirror images of the floor plans shown in the brochure. Orientations and facings will differ depending on the unit you are purchasing, please refer to the key plan. The above plans and illustrations are subject to changes as may be required or approved by the relevant authorities and do not form part of any offer or contract. Areas are estimates only and are subject to final survey. The balcony & PES shall not be enclosed unless with the approved balcony screen. For an illustration of the approved balcony screen, please refer to Annex 1 of this brochure.

TYPE C7S

100 sqm / 1076 sqft

Blk 9 #02-28 to #13-28

MIRROR UNIT

Blk 11 #02-29 to #13-29

TYPE C7S(L)

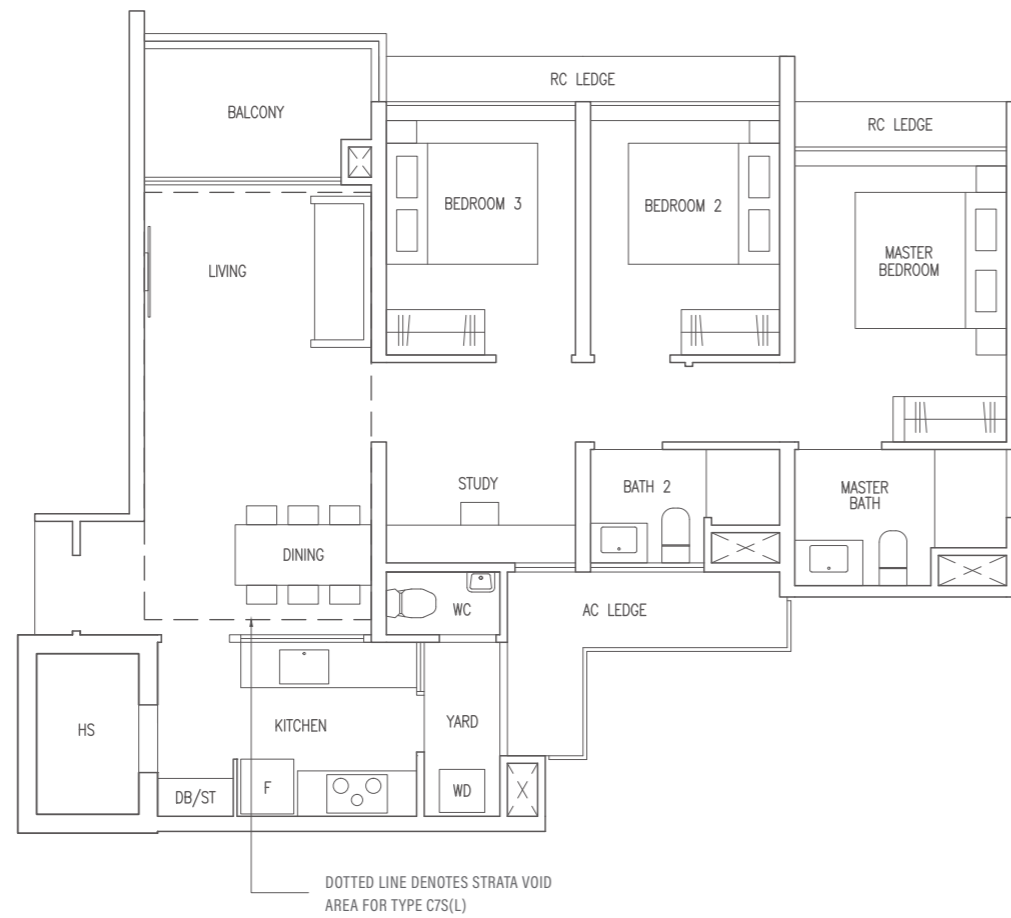
119 sqm / 1281 sqft

(Inclusive of 19 sqm strata void over living / dining)

Blk 9 #14-28

MIRROR UNIT

Blk 11 #14-29



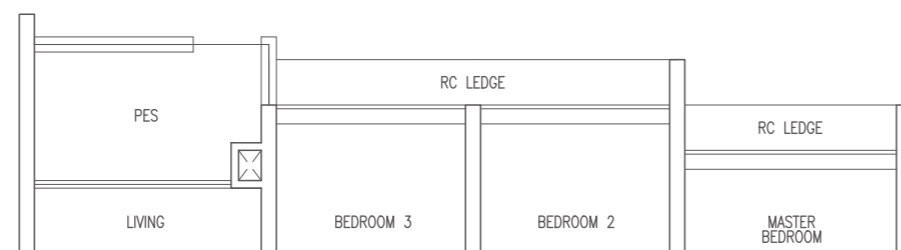
TYPE C7S(p)

100 sqm / 1076 sqft

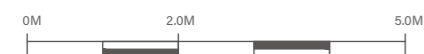
Blk 9 #01-28

MIRROR UNIT

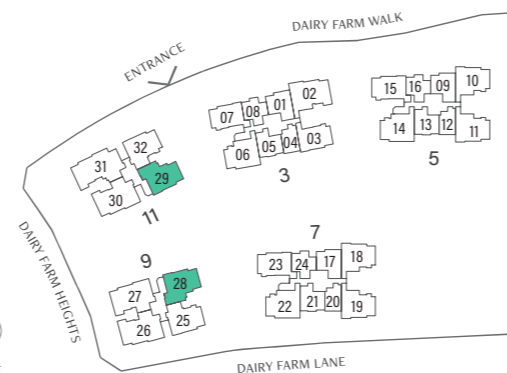
Blk 11 #01-29



F	Fridge	DB/ST	Distribution Board / Storage
WD	Washer Dryer	RC LEDGE	Reinforced Concrete Ledge
HS	Household Shelter		



KEY PLAN IS NOT DRAWN TO SCALE



TYPE D1

118 sqm / 1270 sqft

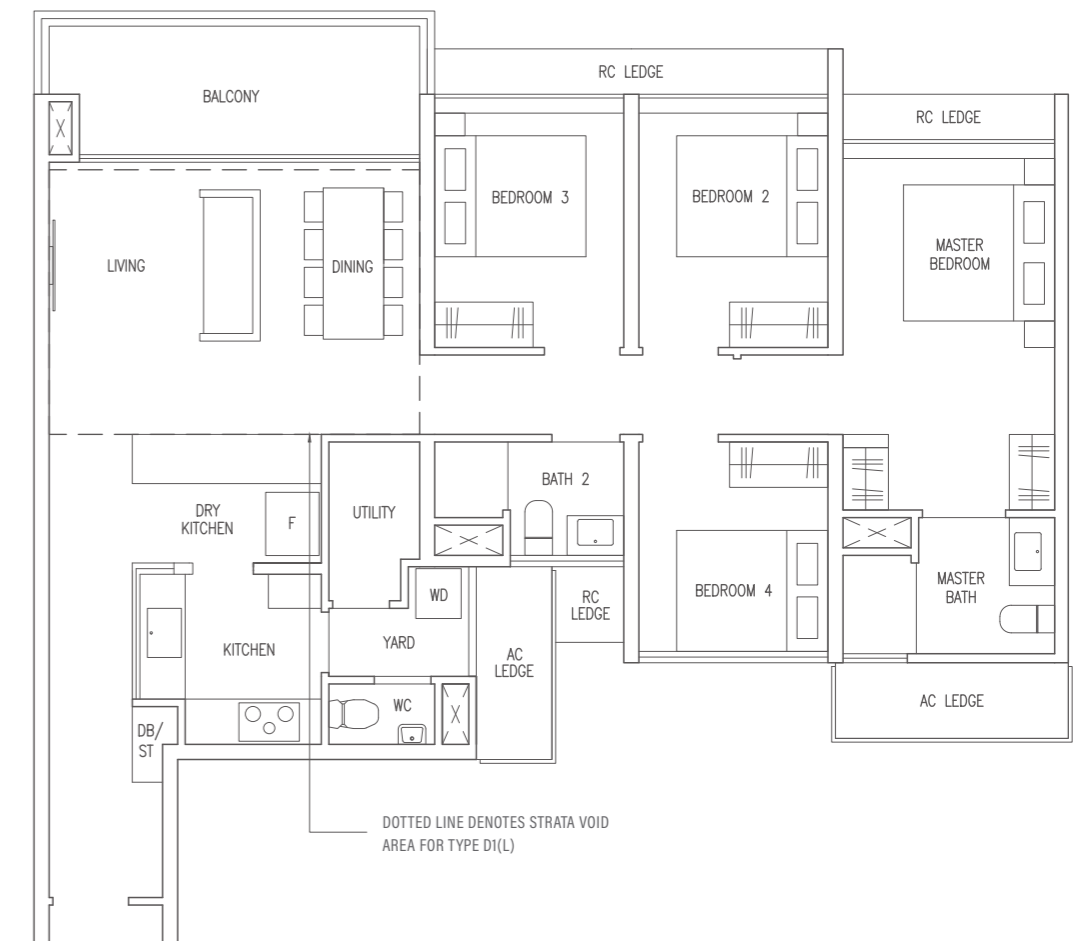
Blk 3 #02-02 to #14-02

TYPE D1(L)

137 sqm / 1475 sqft

(Inclusive of 19 sqm strata void over living / dining)

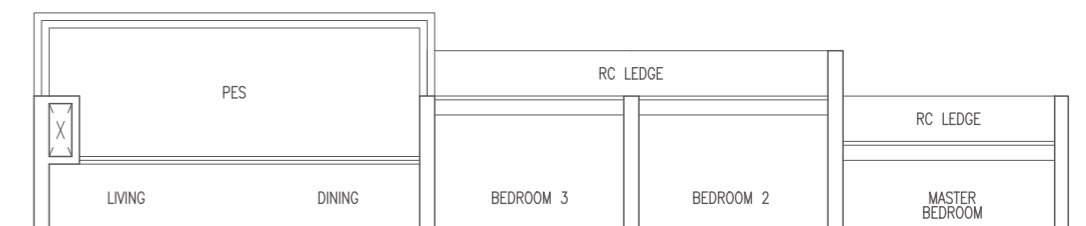
Blk 3 #15-02



TYPE D1(p)

118 sqm / 1270 sqft

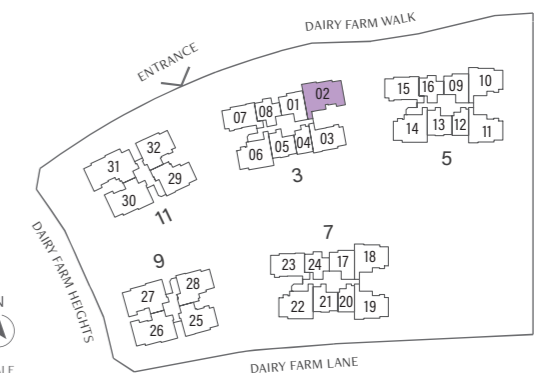
Blk 3 #01-02



F	Fridge	DB/ST	Distribution Board / Storage
WD	Washer Dryer	RC LEDGE	Reinforced Concrete Ledge
HS	Household Shelter		



KEY PLAN IS NOT DRAWN TO SCALE



Area includes AC ledge, balcony, Private Enclosed Space (PES) and strata void where applicable. All RC ledges are excluded from strata area and are non-load bearing. Some units are mirror images of the floor plans shown in the brochure. Orientations and facings will differ depending on the unit you are purchasing, please refer to the key plan. The above plans and illustrations are subject to changes as may be required or approved by the relevant authorities and do not form part of any offer or contract. Areas are estimates only and are subject to final survey. The balcony & PES shall not be enclosed unless with the approved balcony screen. For an illustration of the approved balcony screen, please refer to Annex 1 of this brochure.

Area includes AC ledge, balcony, Private Enclosed Space (PES) and strata void where applicable. All RC ledges are excluded from strata area and are non-load bearing. Some units are mirror images of the floor plans shown in the brochure. Orientations and facings will differ depending on the unit you are purchasing, please refer to the key plan. The above plans and illustrations are subject to changes as may be required or approved by the relevant authorities and do not form part of any offer or contract. Areas are estimates only and are subject to final survey. The balcony & PES shall not be enclosed unless with the approved balcony screen. For an illustration of the approved balcony screen, please refer to Annex 1 of this brochure.

TYPE D2

120 sqm / 1292 sqft

Blk 9 #02-26 to #13-26
Blk 11 #02-30 to #13-30

MIRROR UNIT

Blk 9 #02-27 to #13-27

TYPE D2(L)

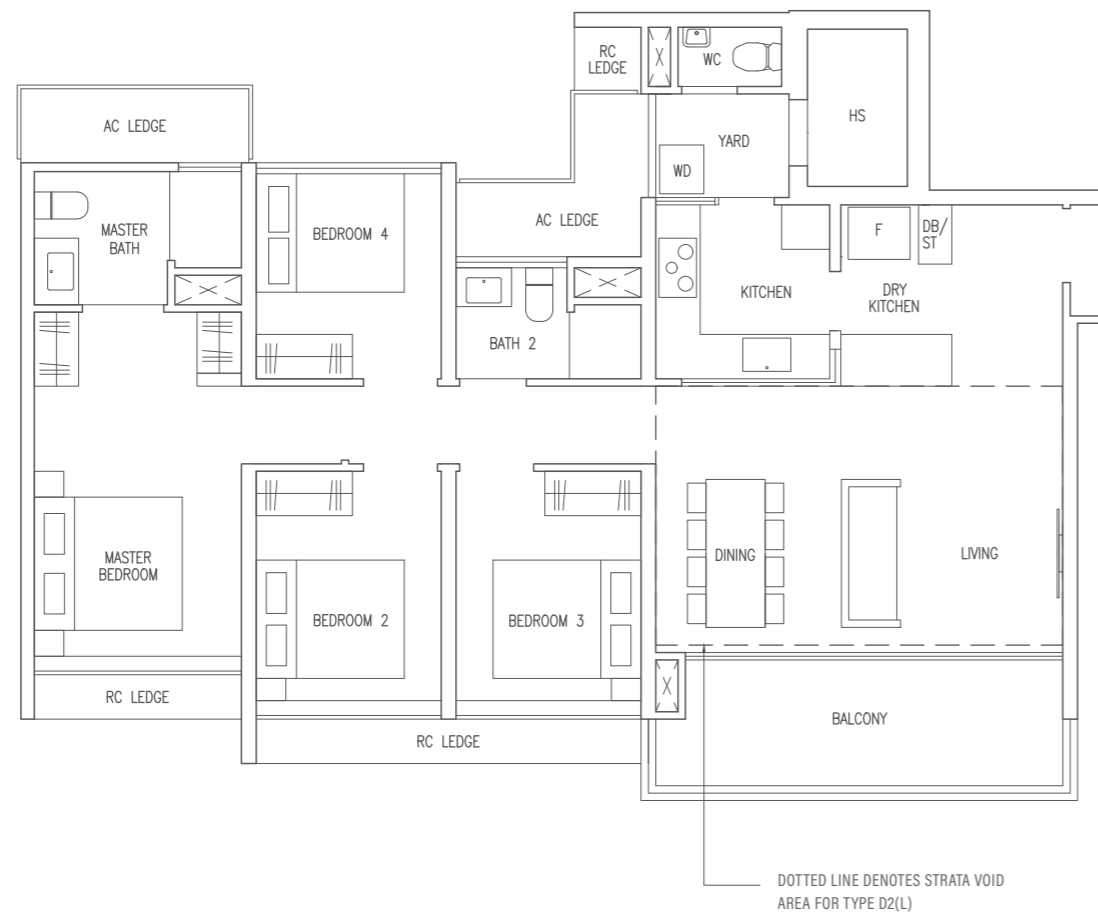
141 sqm / 1518 sqft

(Inclusive of 21 sqm strata void over living / dining)

Blk 9 #14-26
Blk 11 #14-30

MIRROR UNIT

Blk 9 #14-27



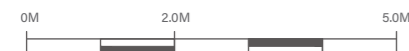
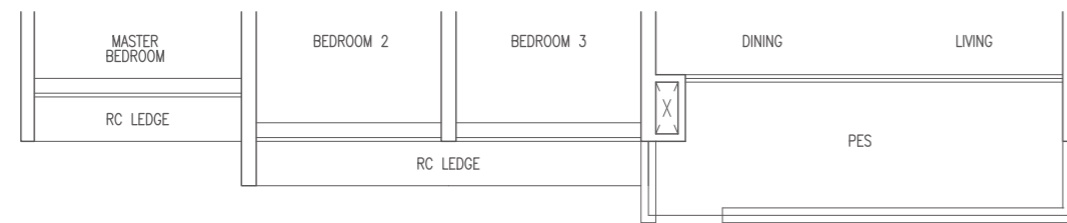
TYPE D2(p)

120 sqm / 1292 sqft

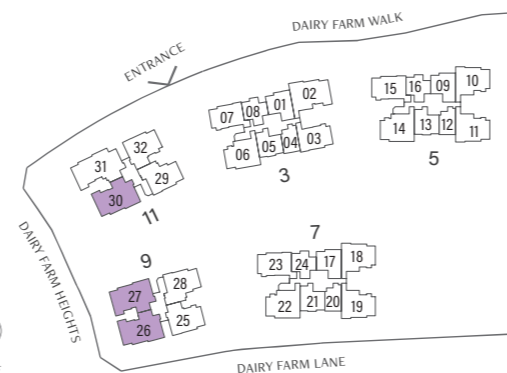
Blk 9 #01-26
Blk 11 #01-30

MIRROR UNIT

Blk 9 #01-27



KEY PLAN IS NOT DRAWN TO SCALE



Area includes AC ledge, balcony, Private Enclosed Space (PES) and strata void where applicable. All RC ledges are excluded from strata area and are non-load bearing. Some units are mirror images of the floor plans shown in the brochure. Orientations and facings will differ depending on the unit you are purchasing, please refer to the key plan. The above plans and illustrations are subject to changes as may be required or approved by the relevant authorities and do not form part of any offer or contract. Areas are estimates only and are subject to final survey. The balcony & PES shall not be enclosed unless with the approved balcony screen. For an illustration of the approved balcony screen, please refer to Annex 1 of this brochure.

TYPE E1

143 sqm / 1539 sqft

Blk 11 #02-31 to #13-31

TYPE E1(L)

164 sqm / 1765 sqft

(Inclusive of 21 sqm strata void over living / dining)

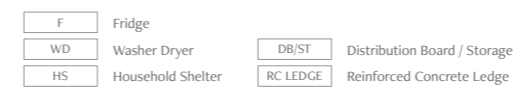
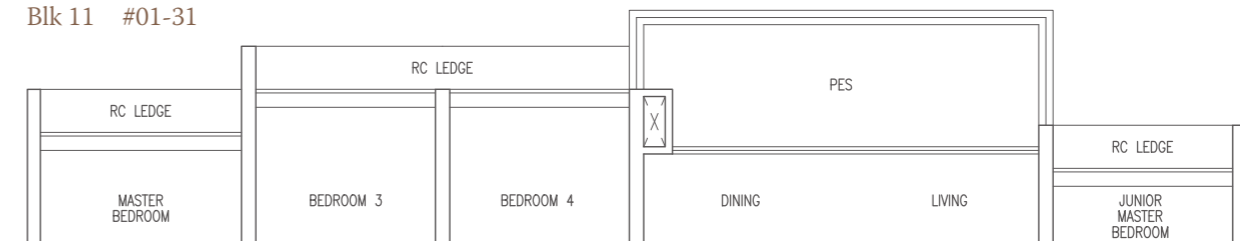
Blk 11 #14-31



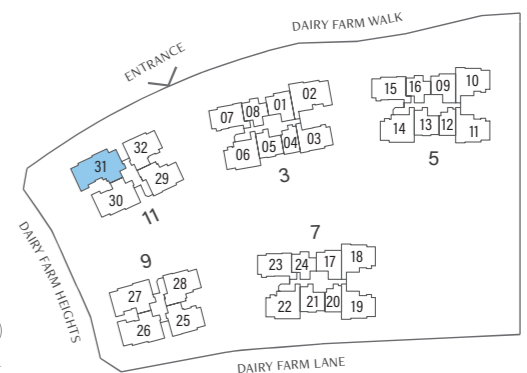
TYPE E1(p)

143 sqm / 1539 sqft

Blk 11 #01-31



KEY PLAN IS NOT DRAWN TO SCALE



Area includes AC ledge, balcony, Private Enclosed Space (PES) and strata void where applicable. All RC ledges are excluded from strata area and are non-load bearing. Some units are mirror images of the floor plans shown in the brochure. Orientations and facings will differ depending on the unit you are purchasing, please refer to the key plan. The above plans and illustrations are subject to changes as may be required or approved by the relevant authorities and do not form part of any offer or contract. Areas are estimates only and are subject to final survey. The balcony & PES shall not be enclosed unless with the approved balcony screen. For an illustration of the approved balcony screen, please refer to Annex 1 of this brochure.